



•ORDER NO.

**D 93039 04**

Cabinet with doors

4 shelves depth 500 mm

3 normal extension drawers

Load capacity per drawer: 50 Kg

Load capacity per shelf: 100 Kg

Dimensions mm 1023x555x2000 h

RAL 5012

SALES PROMOTION VALID FROM  
THE 15<sup>TH</sup> OCTOBER UNTIL  
THE 31<sup>ST</sup> JANUARY

SALES PROMOTION 2007

**5** YEARS  
guarantee

Catalogue no. gb 222 00

## CABINET WITH 7 DRAWERS



ORDER NO.	DRAWERS
<b>D 93001 04</b>	<b>7</b>
Cabinet with 7 full extension drawers	
Central cylinder lock with 2 keys	
Cabinet load capacity: 900 Kg	
Load capacity per drawer: 70 Kg	
Dimensions mm 717x600x1000 h	

RAL 5012

## CABINET WITH 7 DRAWERS



ORDER NO.	DRAWERS
<b>D 93020 04</b>	<b>7</b>
Cabinet with 7 normal extension drawers	
Cabinet load capacity: 3000 Kg	
Load capacity per drawer: 80-100 Kg	
Dimensions mm 717x726x1000 h	
Central lock	

RAL 5012

## CABINET WITH 8 DRAWERS



ORDER NO.	DRAWERS
<b>D 93019 04</b>	<b>8</b>
Cabinet with 8 normal extension drawers	
Cabinet load capacity: 3000 Kg	
Load capacity per drawer: 60-100 Kg	
Dimensions mm 717x726x1000 h	
Central lock	

RAL 5012

## CABINET WITH 9 DRAWERS



ORDER NO.	DRAWERS
<b>D 93018 04</b>	<b>9</b>
Cabinet with 9 normal extension drawers	
Cabinet load capacity: 3000 Kg	
Load capacity per drawer: 100 Kg	
Dimensions mm 717x726x1000 h	
Central lock	

RAL 5012

## CABINET WITH 9 DRAWERS



ORDER NO.	DRAWERS
<b>D 93082 04</b>	<b>9</b>
Cabinet with 9 full telescopic extension drawers	
Cylinder lock with 2 keys	
Cabinet load capacity: 3000 Kg	
Load capacity per drawer: 200 Kg	
Dimensions mm 717x726x1000 h	

RAL 5012

## CABINET WITH 5 DRAWERS



ORDER NO.	DRAWERS
<b>D 93077 04</b>	<b>5</b>
Cabinet with 5 drawers	
2 swivel wheels in standard rubber with brake Ø 125 mm	
2 fixed wheels in standard rubber Ø 125 mm	
<b>Central</b> cylinder lock with 2 keys	
Cabinet load capacity: 225 Kg	
<b>Dimensions mm 792x600x920 h</b>	

RAL 5012

## CABINET WITH 5 DRAWERS



ORDER NO.	DRAWERS
<b>D 93002 04</b>	<b>5</b>
Cabinet with 5 drawers	
1 swivel wheel in standard rubber with brake Ø 100 mm	
1 swivel wheel in standard rubber Ø 100 mm	
2 fixed wheels in standard rubber Ø 100 mm	
<b>Central</b> cylinder lock with 2 keys	
Cabinet load capacity: 170 Kg	
<b>Dimensions mm 445x775x885 h</b>	

RAL 5012

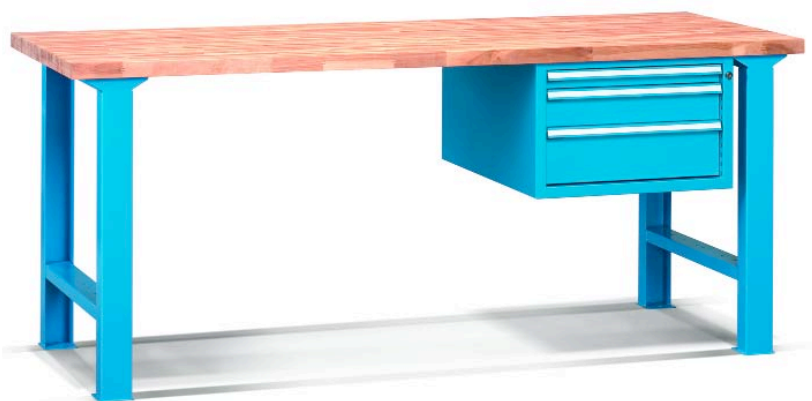
## MOBILE WORKSTATION WITH 4 DRAWERS



ORDER NO.	DRAWERS
<b>D 93096 04</b>	<b>4</b>
Mobile workstation with 4 drawers	
2 height adjustable shelves with 4 upstands	
1 lock with anti-tilt rod	
2 swivel wheels in standard rubber with brakes Ø 150 mm	
2 fixed wheels in standard rubber Ø 150 mm	
Workstation load capacity: 250 Kg. Load capacity per drawer: 70 Kg	
Load capacity per adjustable shelf with 4 upstands: 70 Kg	
Worktop load capacity: 250 Kg	
<b>Overall dimensions mm 1072x600x910 h</b>	
<b>Dim. multiplex worktop mm 995x600x25 h</b>	

RAL 5012

## WORKSTATION LENGTH 1500 mm



ORDER NO.
<b>D 93047 04</b>
Workstation length 1500 mm
1 beech-strip worktop
2 bench legs
3 normal extension drawers
Cylinder lock with 2 keys
Workstation load capacity: 1000 Kg
Load capacity per drawer: 60-100 Kg
<b>Dimensions mm 1500x750x832 h</b>

RAL 5012

## CABINET WITH DOORS WITHOUT TOOL HOLDERS



The frames are height adjustable and can be assembled angled or horizontally



### TOOL HOLDERS

#### • ORDER NO.

**D 93112 04**

Cabinet with doors without tool holders

4 angled frames height adjustable

**Tool holders excluded**

Load capacity per frame: 150 Kg

Dimensions mm 1023x555x2000 h

RAL 5012

• ORDER NO.	PACKAGING UNIT:	FOR TOOLS
D 93115 03	10	ISO 30
D 93116 03	10	ISO 40
D 93117 03	10	ISO 45
D 93118 03	10	ISO 50
D 93119 03	24	VDI 30
D 93120 03	24	VDI 40
D 93121 03	16	VDI 50
D 93122 03	16	VDI 60
D 93123 03	4	MORSE 2
D 93124 03	4	MORSE 3
D 93125 03	4	MORSE 4
D 93126 03	4	MORSE 5
D 93127 03	10	HSK A32-B40
D 93128 03	10	HSK A40-B50
D 93129 03	10	HSK A50-B63
D 93130 03	10	HSK A63-B80
D 93131 03	10	HSK A80-B100
D 93132 03	10	HSK A100-B125
D 93133 03	10	CAPTO C4
D 93134 03	10	CAPTO C5
D 93135 03	10	CAPTO C6

## TROLLEY WITHOUT TOOL HOLDERS



#### • ORDER NO.

**D 93113 51**

Trolley without tool holders

3 tool holder frames with supports

**Tool holders excluded**

Trolley load capacity: 500 Kg

Dimensions mm 1064x512x890 h

RAL 5012-RAL 7000

## LOCKER WITH 4 COMPARTMENTS



### • ORDER NO.

**D 93138 51**

Locker with 4 compartments

cylinder lock

Dimensions mm 1195x500x1750 h

RAL 5012-RAL 7000

## LOCKER WITH 3 COMPARTMENTS



### • ORDER NO.

**D 93140 51**

Locker with 3 compartments

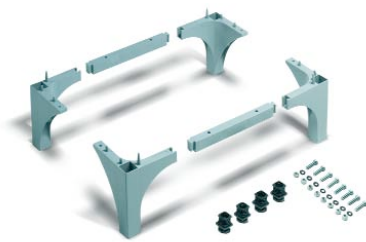
cylinder lock

divider between clean and dirty clothes

Dimensions mm 1195x500x1750 h

RAL 5012-RAL 7000

## PAIR OF LEGS



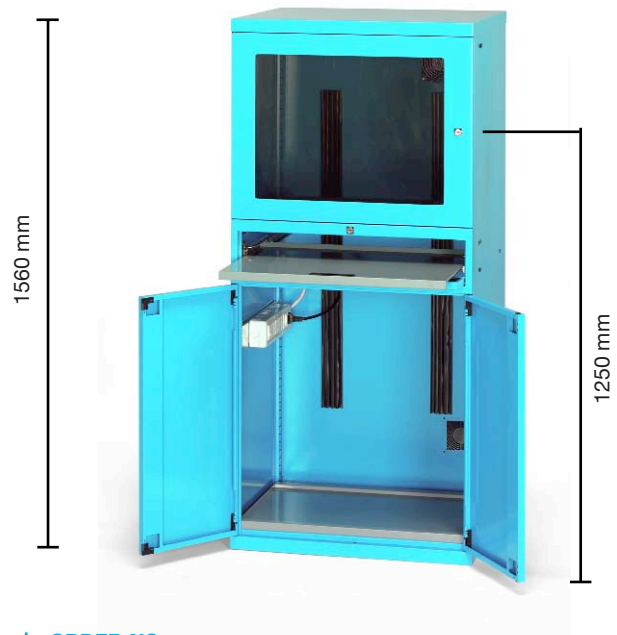
### • ORDER NO.

**D 93141 01**

Pair of plastic legs height adjustable from 180 to 200 mm

RAL 7000

## COMPUTER CABINET



### • ORDER NO.

**D 93064 04**

Computer cabinet

2 height adjustable shelves

1 retractable keyboard shelf

Socket with 5 Schuko plugs and circuit breaker

Dimensions mm 717x635x1560 h

RAL 5012

## CABINET WITH SLIDING DOORS



### • ORDER NO.

**D 93044 04**

Cabinet with sliding doors

4 shelves depth 370 mm

Load capacity per shelf: 100 Kg

Dimensions mm 1500x450x2000 h

RAL 5012

## CABINET WITH POLYCARBONATE DOORS



### • ORDER NO.

**D 93089 04**

Cabinet with polycarbonate doors

4 shelves depth 500 mm

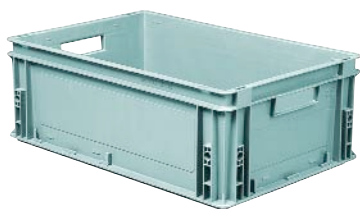
Thickness polycarbonate: 3 mm

Load capacity per shelf: 100 Kg

Dimensions mm 1023x555x2000 h

RAL 5012

## STACKING CONTAINER



60 pcs

### • ORDER NO.

**D 93253 01**

Plastic stacking container type 6422B

Packaging unit 60 pcs

Dimensions mm 600x400x220 h

GREY

## STORAGE CONTAINER



60 pcs

### • ORDER NO.

**D 93252 01**

Plastic storage container size 3

Packaging unit 60 pcs

Dimensions mm 350x200x200 h

GREY

## ■ UPRIGHT FRAME



## ■ CROSS BRACING



## ■ SLOTTED SHELF



### • ORDER NO.

**D 93149 99**

Upright frame with 4 connection bars

Dimensions mm 500x2000 h

GALVANISED

### • ORDER NO.

**D 93147 99**

Cross bracing

A cross bracing must be fitted to each third bay

Dimensions mm 1000x2000 h

GALVANISED

### • ORDER NO.

**D 93145 99**

Slotted shelf without strengthening bar

Dimensions mm 1000x500x35 h

GALVANISED



## ■ TRANSPORT TROLLEY



### • ORDER NO.

**D 93110 04**

Transport trolley

2 swivel wheels in standard rubber Ø 125 mm

2 fixed wheels in standard rubber Ø 125 mm

Trolley load capacity: 250 Kg

Dimensions mm 1135x700x915 h

RAL 5012

Cikkszám	Listaár	Akciós ár
D 93039 04	—199 126 Ft	129 432 Ft
D 93001 04	—197 565 Ft	128 417 Ft
D 93020 04	—254 930 Ft	165 704 Ft
D 93019 04	—272 881 Ft	177 372 Ft
D 93018 04	—288 622 Ft	187 604 Ft
D 93082 04	—375 616 Ft	244 150 Ft
D 93077 04	—203 607 Ft	132 345 Ft
D 93002 04	—187 853 Ft	122 105 Ft
D 93096 04	—276 271 Ft	179 576 Ft
D 93047 04	—153 290 Ft	99 638 Ft
D 93112 04	—187 829 Ft	122 089 Ft
D 93115 03	—13 168 Ft	8 560 Ft
D 93116 03	—13 168 Ft	8 560 Ft
D 93117 03	—13 422 Ft	8 724 Ft
D 93118 03	—14 572 Ft	9 471 Ft
D 93119 03	—34 895 Ft	22 682 Ft
D 93120 03	—36 813 Ft	23 929 Ft
D 93121 03	—25 692 Ft	16 700 Ft
D 93122 03	—27 610 Ft	17 947 Ft
D 93123 03	—5 368 Ft	3 489 Ft
D 93124 03	—5 430 Ft	3 529 Ft
D 93125 03	—5 430 Ft	3 529 Ft
D 93126 03	—5 882 Ft	3 824 Ft
D 93127 03	—13 038 Ft	8 475 Ft
D 93128 03	—13 038 Ft	8 475 Ft
D 93129 03	—14 418 Ft	9 372 Ft
D 93130 03	—14 418 Ft	9 372 Ft
D 93131 03	—16 872 Ft	10 967 Ft
D 93132 03	—16 872 Ft	10 967 Ft
D 93133 03	—17 126 Ft	11 132 Ft
D 93134 03	—17 640 Ft	11 466 Ft
D 93135 03	—18 154 Ft	11 800 Ft
D 93113 51	—176 728 Ft	114 873 Ft
D 93138 51	—121 422 Ft	78 924 Ft
D 93140 51	—127 109 Ft	82 621 Ft
D 93141 01	—5 752 Ft	3 739 Ft
D 93064 04	—340 224 Ft	221 145 Ft
D 93044 04	—227 538 Ft	147 900 Ft
D 93089 04	—174 932 Ft	113 706 Ft
D 93253 01	—4 000 Ft	2 600 Ft
D 93252 01	—1 263 Ft	821 Ft
D 93149 99	—12 276 Ft	7 979 Ft
D 93147 99	—4 306 Ft	2 799 Ft
D 93145 99	—5 198 Ft	3 378 Ft
D 93110 04	—51 461 Ft	33 449 Ft

**-35%**



**neoBOX**  
Storage systems

**Díjtalan házhozszállítás!**

Szállítási határidő:  
megrendeléstől max. 14 nap

A feltüntetett árak nettó árak,  
melyek nem tartalmazzák  
a 20%-os ÁFA-t!

Nagyobb mértékű HUF/EUR  
árfolyamváltozás esetén áraink  
változtatásának jogát fenntartjuk!

NEOBOX Kft. Storage Systems

H-1028 Budapest, Kő u. 43.

Telefon: +36 (1) 397 0878

Telefax: +36 (1) 274 6921

e-mail: info@neobox.hu